



## Product Overview

The structural design of the push button switch and the signal light is in complete conformity to national and EC CE safety certification requirements, with features of unique exquisite operating mechanism · safe and reliable use, convenient wiring, and ingenious and reasonable structural design. The product is applicable to electric power, telecommunications, shipbuilding, machine tools, textile, printing, automatic equipment, mining machinery and other equipment lines as indication signal, warning signal, accident signal, and control signal chain for instruments and electrical equipments, etc..

The applicable standards: IEC60947-5-1

## Product Features

The product features long life, low energy consumption, small volume, light weight, diversified head styles, high reliability, well-designed appearance, small size, convenient installation, exquisite workmanship and ingenious design. With its accurate installation positioning function to prevent loosening, the product is the best choice for the user who demands panel miniaturization and integrated control.

## Product Specifications

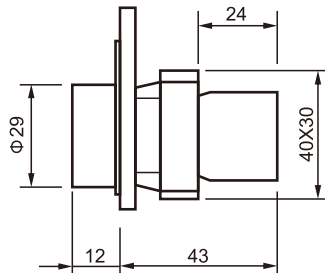
Descriptions	Model	Voltage	Color
Indicator	AD16-16DS	AC/DC 6V AC/DC 12V AC/DC 24V AC/DC 48V AC/DC 110V AC/DC 220V AC 110V AC 220V AC 380V	Red, Green Yellow, Blue White
	AD16-22DS		
	AD16-30DS		
Buzzer	AD16-16SM	AC/DC 6V AC/DC 12V AC/DC 24V AC/DC 48V AC/DC 110V AC/DC 220V AC 110V AC 220V AC 380V	Red, Green Yellow, Blue White
	AD16-22SM		
	AD16-30SM		

Additional/replacement contact block, screw and captive cable

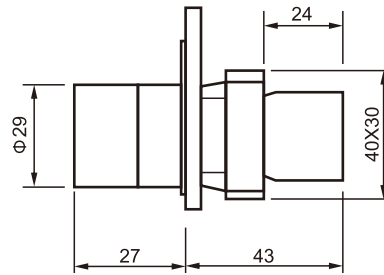
Descriptions	Model	Contact Type
Contact	ZB2-BE101	1NO
	ZB2-BE102	1NC
Base with Contact	ZB2-BZ101	1NO
	ZB2-BZ102	1NC
	ZB2-BZ103	1NO+1NC
	ZB2-BZ104	
	ZB2-BZ105	

Push Button			
Description	Model	Contact Type	Color
Flat Head Button	XB2-BA21	1NO	Black
	XB2-BA31		Green
	XB2-BA51		Yellow
	XB2-BA61		Blue
	XB2-BA42	1NC	Red
Mushroom Button	XB2-BC21	1NO	Black
	XB2-BC31		Green
	XB2-BC51		Yellow
	XB2-BC61		Blue
	XB2-BC42	1NC	Red
Optional Switch	XB2-BD21	1NO	Black
	XB2-BD41		Green
	XB2-BJ21		Yellow
	XB2-BD33	2NO	Blue
	XB2-BJ33		Red
	XB2-BD25	1NO+1NC	Yellow
	XB2-BJ25		Red
Flat Light Button	XB2-BW3161	1NO	Black
	XB2-BW3361		Yellow
	XB2-BW3561		Blue
	XB2-BW3661		Red
	XB2-BW3462	1NC	Black
	XB2-BW3165	1NO+1NC	Black
	XB2-BW3365		Green
	XB2-BW3465		Red
	XB2-BW3565		Yellow
	XB2-BW3665		Blue
XB2-BW3665	Blue		
Key Button	XB2-BG21	1NO	Black
	XB2-BG41		Green
	XB2-BG25	1NO+1NC	Red
	XB2-BG45		Yellow
	XB2-BG33		Blue
	XB2-BG53		Blue

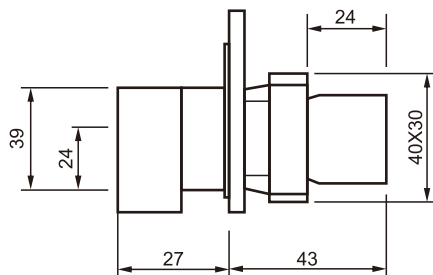
## Product Dimensions



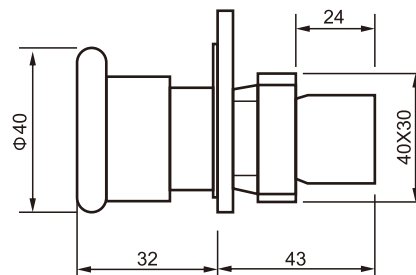
XB2-BA\*\*



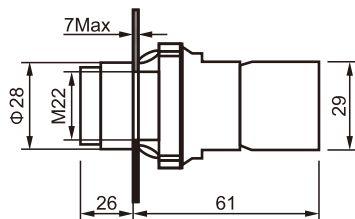
XB2-BD\*\*



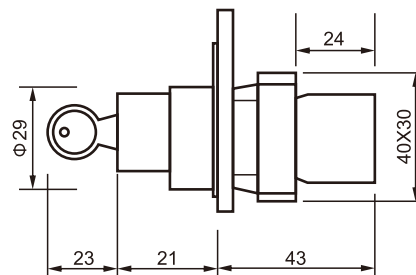
XB2-BJ\*\*



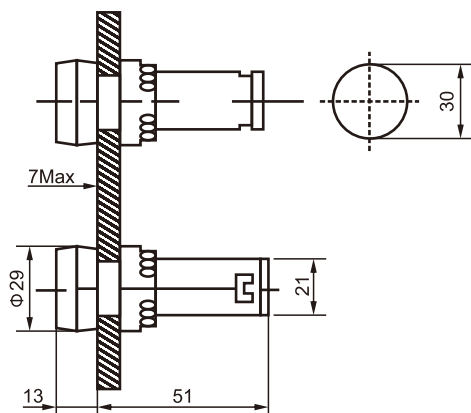
XB2-BC\*\*



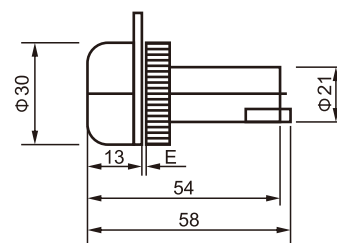
XB2-BW\*\*



XB2-BG\*\*



AD16 ( INDICATOR )



AD16 ( BUZZER )